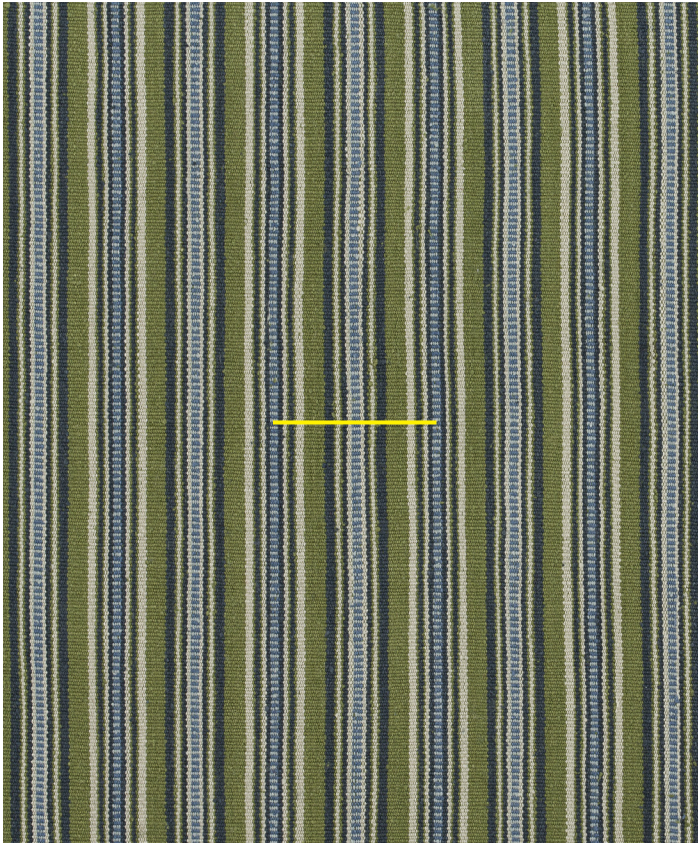


Sharang Tara Kale | BT-TA-04

Sharang Tara refers to a traditional design from south-eastern Bhutan, with colourful warp stripes on a white ground.



**Design** Sharang Tara

**Colour** Kale

**Code** BT-TA-04

**Composition** 100% Silk

**Width** 64cm / 25in

**Repeat** 4cm (h)  
1.5in (h)

**Weight** 234g/sqm

**Notes** .....  
.....  
.....  
.....



Sharang Tara Kale | BT-TA-04

[www.namaysamay.com](http://www.namaysamay.com)

